

Angular Contact Ball Bearings

Bearing No. : **NACHI 7224C**

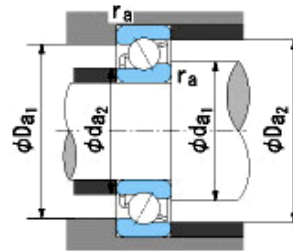
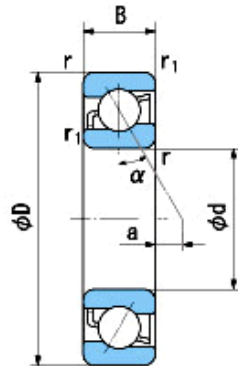
■ Bearing Type

■ Clearance

■ Tolerance Class

Dimensions

d = 120⁰_{-0.020}
 D = 215⁰_{-0.030}
 B = 40⁰_{-0.200}
 r = 2.1~4
 (Radial Direction)
 r = 2.1~6.5
 (Axial Direction)
 r1 = 1.1~2
 (Radial Direction)
 r1 = 1.1~3.5
 (Axial Direction)
 a = -0.6



Dimensions

da1(min) = 132
 da2(min) = 132
 Da1(max) = 203
 Da2(max) = 208
 ra(max) = 2
 ra1(max) = 1
 Mass = 6.05 kg

Basic Dynamic Load Rating Cr : **185,000** N

Basic Static Load Rating Cor : **176,000** N

Limiting Speed ;

Grease Lubrication : **4,800** min⁻¹

Oil Lubrication : **6,600** min⁻¹

| | INNER RING | OUTER RING |
|--------------------------------|--------------|--------------|
| O.D.Surface Runout with Side : | | - |
| Axial Runout with Bore : | - | - |
| Axial Runout with Raceway : | - | - |
| Width Variation : | 0.025 | 0.025 |
| Radial Runout : | 0.025 | 0.050 |